

# \$459,000 - 106 Glamorgan Drive, Sherwood Park

MLS® #E4466077

**\$459,000**

5 Bedroom, 2.50 Bathroom, 1,122 sqft  
Single Family on 0.00 Acres

Glen Allan, Sherwood Park, AB

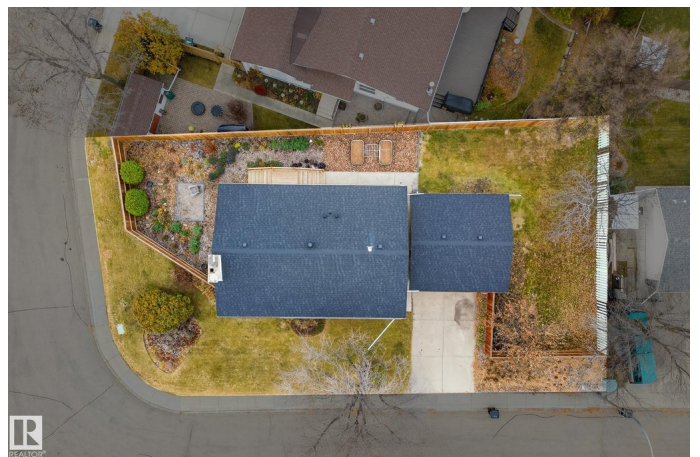
Welcome to Glen Allan â€” a warm, sun-filled 5-bed, 3-bath bi-level on a front facing large south lot right across from the park.

Exceptionally cared for with over \$40K in updates, newer shingles, fencing, electrical pig-tailing, fresh paint, and a beautiful low-maintenance yard with garden space. Bright hardwood floors, an inviting white kitchen, and spacious living + dining areas make the main floor feel instantly like home. The primary bedroom features its own ensuite, with two more bedrooms and a 4-pc bath completing the level. The fully finished basement is surprisingly bright with large windows, a cozy wood-burning fireplace, two additional bedrooms, a 4-pc bath, great storage, and newer washer/dryer. Updates include furnace, exterior doors, garage man door, shingles, fencing, and more. Quiet street, steps to schools, trails, parks, and the Glen Allan Rec Centre. A sunny, welcoming home in a neighbourhood everyone loves â€” ready for its next chapter.

Built in 1973

## Essential Information

MLS® #	E4466077
Price	\$459,000
Bedrooms	5



Bathrooms	2.50
Full Baths	2
Half Baths	1
Square Footage	1,122
Acres	0.00
Year Built	1973
Type	Single Family
Sub-Type	Detached Single Family
Style	Bi-Level
Status	Active

### **Community Information**

Address	106 Glamorgan Drive
Area	Sherwood Park
Subdivision	Glen Allan
City	Sherwood Park
County	ALBERTA
Province	AB
Postal Code	T8A 2Y8

### **Amenities**

Amenities	On Street Parking, Hot Water Natural Gas, Vinyl Windows
Parking	Double Garage Detached

### **Interior**

Interior Features	ensuite bathroom
Appliances	Dishwasher-Built-In, Dryer, Garage Control, Garage Opener, Hood Fan, Oven-Microwave, Refrigerator, Stove-Electric, Washer
Heating	Forced Air-1, Natural Gas
Fireplace	Yes
Fireplaces	Brick Facing
Stories	2
Has Basement	Yes
Basement	Full, Finished

### **Exterior**

Exterior	Wood, Vinyl
Exterior Features	Corner Lot, Fenced, Fruit Trees/Shrubs, Low Maintenance Landscape, Playground Nearby, Public Transportation, Schools, Shopping Nearby

Roof	Asphalt Shingles
Construction	Wood, Vinyl
Foundation	Concrete Perimeter

### **Additional Information**

Date Listed	November 18th, 2025
-------------	---------------------

Days on Market	1
----------------	---

Zoning	Zone 25
--------	---------

DATA IS DEEMED RELIABLE BUT IS NOT GUARANTEED ACCURATE BY THE REALTORS® ASSOCIATION OF EDMONTON. COPYRIGHT 2025 BY THE REALTORS® ASSOCIATION OF EDMONTON. ALL RIGHTS RESERVED. Trademarks are owned or controlled by the Canadian Real Estate Association (CREA) and identify real estate professionals who are members of CREA (REALTOR®, REALTORS®) and/or the quality of services they provide (MLS®, Multiple Listing Service®)

Listing information last updated on November 18th, 2025 at 10:02pm MST