

\$525,000 - 2501 10360 102 Street, Edmonton

MLS® #E4464778

\$525,000

2 Bedroom, 2.00 Bathroom, 915 sqft
Condo / Townhouse on 0.00 Acres

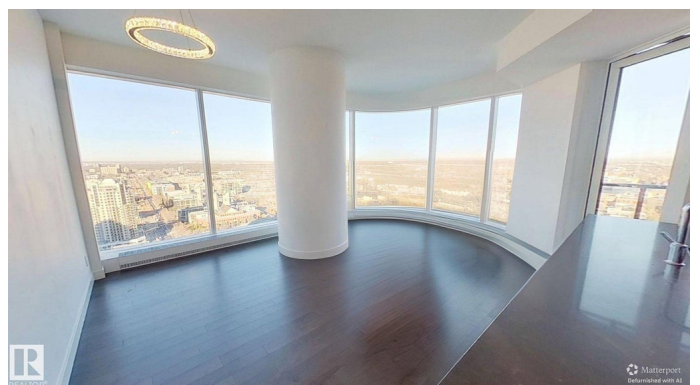
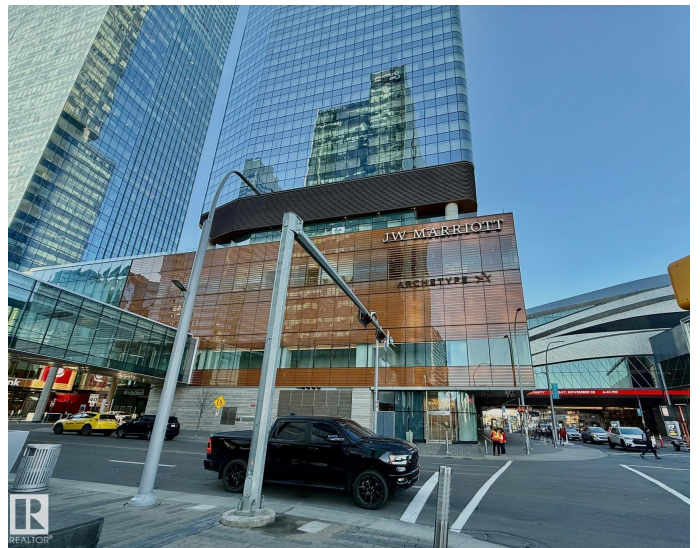
Downtown (Edmonton), Edmonton, AB

Welcome to The Legends Private Residences in Edmontonâ€™s premier ICE District. This stunning 2 bedroom, 2 bathroom condo offers modern luxury with an open-concept layout, floor-to-ceiling windows, and exceptional city views. The kitchen features quartz countertops, premium cabinetry, and built-in stainless steel appliances. Residents enjoy exclusive access to world-class amenities including the Archetype gym, indoor pool, and sauna. This unit includes 3 amenity passes and one titled parking stall. Located above the JW Marriott, youâ€™ll experience unparalleled convenience with fine dining, shopping, and Rogers Place just steps away. Perfect for professionals or investors seeking upscale downtown living in one of Edmontonâ€™s most desirable addresses.

Built in 2017

Essential Information

MLS® #	E4464778
Price	\$525,000
Bedrooms	2
Bathrooms	2.00
Full Baths	2
Square Footage	915
Acres	0.00
Year Built	2017



Type	Condo / Townhouse
Sub-Type	Apartment High Rise
Style	Single Level Apartment
Status	Active

Community Information

Address	2501 10360 102 Street
Area	Edmonton
Subdivision	Downtown (Edmonton)
City	Edmonton
County	ALBERTA
Province	AB
Postal Code	T5J 0K6

Amenities

Amenities	Air Conditioner, Ceiling 9 ft., Exercise Room, Hot Tub, Hot Water Electric, Parking-Visitor, Party Room, Pool-Indoor, Recreation Room/Centre, Sauna; Swirlpool; Steam, Security Personnel, Social Rooms
Parking	Parkade
Has Pool	Yes

Interior

Appliances	Air Conditioning-Central, Dishwasher-Built-In, Dryer, Freezer, Oven-Microwave, Refrigerator, Stove-Electric, Washer, Window Coverings
Heating	Forced Air-1, Electric
# of Stories	54
Stories	1
Has Basement	Yes
Basement	None, No Basement

Exterior

Exterior	Concrete, Metal
Exterior Features	Low Maintenance Landscape, Public Swimming Pool, Recreation Use, Schools, Shopping Nearby, View Downtown
Roof	Metal, See Remarks
Construction	Concrete, Metal
Foundation	Concrete Perimeter

Additional Information

Date Listed November 5th, 2025

Days on Market 1

Zoning Zone 12

Condo Fee \$1,089

DATA IS DEEMED RELIABLE BUT IS NOT GUARANTEED ACCURATE BY THE REALTORS® ASSOCIATION OF EDMONTON. COPYRIGHT 2025 BY THE REALTORS® ASSOCIATION OF EDMONTON. ALL RIGHTS RESERVED. Trademarks are owned or controlled by the Canadian Real Estate Association (CREA) and identify real estate professionals who are members of CREA (REALTOR®, REALTORS®) and/or the quality of services they provide (MLS®, Multiple Listing Service®)

Listing information last updated on November 6th, 2025 at 5:47pm MST