

\$125,000 - 601 2908 116a Avenue, Edmonton

MLS® #E4462996

\$125,000

3 Bedroom, 1.00 Bathroom, 982 sqft
Condo / Townhouse on 0.00 Acres

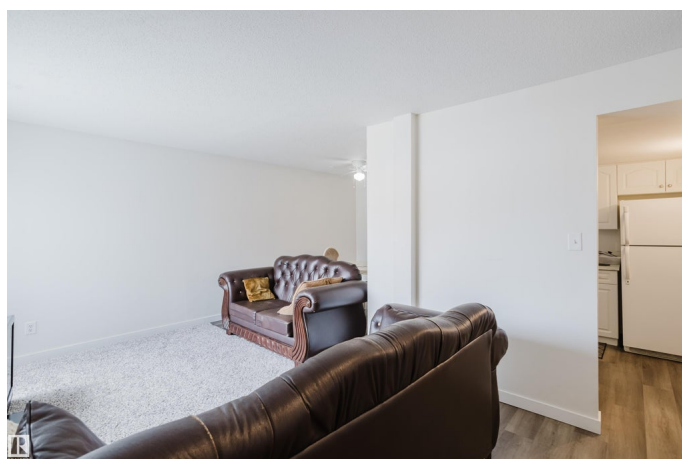
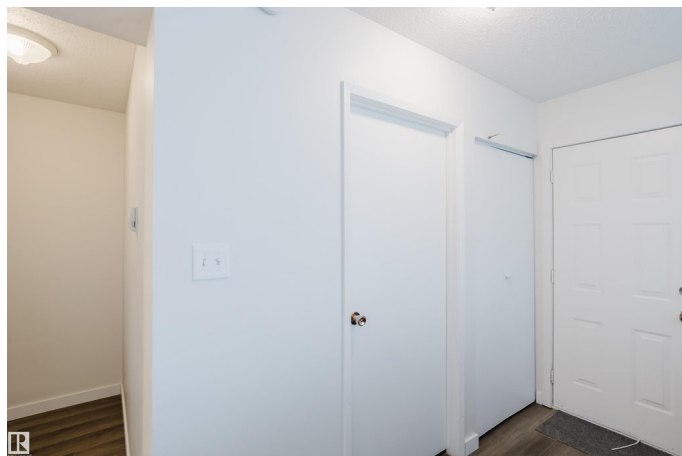
Rundle Heights, Edmonton, AB

Welcome to #601, 2908 116A Avenue NW – a bright and budget-friendly 3-bedroom townhouse in Parkridge Estates, a well-managed complex just steps from schools, parks, transit, and the river valley. Offering nearly 1,000 sq ft of practical living space, this home is perfect for first-time buyers, downsizers, or investors. The main floor features a sun-filled living room, a functional galley-style kitchen, and a dedicated dining area – ideal for everyday living and entertaining. Upstairs, you’ll find three comfortable bedrooms, a full 4-piece bathroom, and plenty of extra storage. Parking is easy with your own assigned stall, plus convenient street and visitor parking nearby. Located in a well-connected Northeast Edmonton community with quick access to Yellowhead and Anthony Henday, this property is a smart move for anyone looking for affordability, convenience, and opportunity.

Built in 1972

Essential Information

MLS® #	E4462996
Price	\$125,000
Bedrooms	3
Bathrooms	1.00
Full Baths	1



Square Footage	982
Acres	0.00
Year Built	1972
Type	Condo / Townhouse
Sub-Type	Townhouse
Style	2 Storey
Status	Active

Community Information

Address	601 2908 116a Avenue
Area	Edmonton
Subdivision	Rundle Heights
City	Edmonton
County	ALBERTA
Province	AB
Postal Code	T5W 4R7

Amenities

Amenities	Detectors Smoke, Patio, See Remarks
Parking	Stall

Interior

Appliances	Dishwasher-Built-In, Dryer, Refrigerator, Stove-Electric, Washer
Heating	Baseboard, Natural Gas
Stories	2
Has Basement	Yes
Basement	None, No Basement

Exterior

Exterior	Wood, Brick, Vinyl
Exterior Features	Golf Nearby, Public Swimming Pool, Schools, Shopping Nearby, See Remarks
Roof	Tar & Gravel
Construction	Wood, Brick, Vinyl
Foundation	Concrete Perimeter

Additional Information

Date Listed	October 21st, 2025
Days on Market	2

Zoning	Zone 23
Condo Fee	\$545

DATA IS DEEMED RELIABLE BUT IS NOT GUARANTEED ACCURATE BY THE REALTORS® ASSOCIATION OF EDMONTON. COPYRIGHT 2025 BY THE REALTORS® ASSOCIATION OF EDMONTON. ALL RIGHTS RESERVED. Trademarks are owned or controlled by the Canadian Real Estate Association (CREA) and identify real estate professionals who are members of CREA (REALTOR®, REALTORS®) and/or the quality of services they provide (MLS®, Multiple Listing Service®)

Listing information last updated on October 23rd, 2025 at 3:18pm MDT