

\$425,000 - 12330 85 Street, Edmonton

MLS® #E4458613

\$425,000

4 Bedroom, 3.00 Bathroom, 1,413 sqft
Single Family on 0.00 Acres

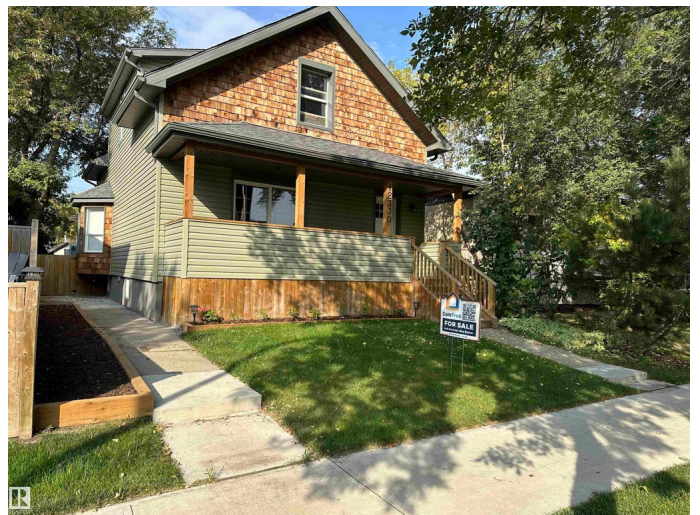
Eastwood, Edmonton, AB

Beautifully upgrade craftsman style home on a large 33x150 lot with new sidewalks and freshly paved tree lined front street. The renovations will be complete for Oct 1 possession. The back yard has mature trees and a huge raised deck. This 1 1/2 story home has 3 bathrooms, 2 kitchens, with additional living space in basement. All plumbing, electrical, and heating has been upgraded, All windows, doors, siding, and roof as well. There is a total of four bedrooms including large basement bedroom

Built in 1938

Essential Information

MLS® #	E4458613
Price	\$425,000
Lease Rate	\$10
Bedrooms	4
Bathrooms	3.00
Full Baths	3
Square Footage	1,413
Acres	0.00
Year Built	1938
Type	Single Family
Sub-Type	Detached Single Family
Style	1 and Half Storey
Status	Active



Community Information

Address	12330 85 Street
Area	Edmonton
Subdivision	Eastwood
City	Edmonton
County	ALBERTA
Province	AB
Postal Code	T5B 3G9

Amenities

Amenities	Crawl Space, Deck, Detectors Smoke, Exterior Walls- 2"x6", Front Porch, Guest Suite, Hot Water Natural Gas, Insulation-Upgraded, Low Flw/Dual Flush Toilet, No Animal Home, No Smoking Home, Parking-Extra, Patio, Smart/Program. Thermostat, R.V. Storage, Storage-In-Suite, Television Connection, Vinyl Windows
Parking	Rear Drive Access

Interior

Appliances	Dishwasher-Built-In, Dryer, Hood Fan, Oven-Microwave, Refrigerator, Stove-Electric, Washer
Heating	Forced Air-1, Natural Gas
Stories	3
Has Basement	Yes
Basement	Full, Finished

Exterior

Exterior	Wood, Stucco
Exterior Features	Back Lane, Fenced, Landscaped, Low Maintenance Landscape, Paved Lane, Playground Nearby, Public Transportation, Schools, Shopping Nearby, Treed Lot
Roof	Asphalt Shingles
Construction	Wood, Stucco
Foundation	Concrete Perimeter

Additional Information

Date Listed	September 19th, 2025
Days on Market	26
Zoning	Zone 05

DATA IS DEEMED RELIABLE BUT IS NOT GUARANTEED ACCURATE BY THE REALTORS® ASSOCIATION OF EDMONTON. COPYRIGHT 2025 BY THE REALTORS® ASSOCIATION OF EDMONTON. ALL RIGHTS

RESERVED. Trademarks are owned or controlled by the Canadian Real Estate Association (CREA) and identify real estate professionals who are members of CREA (REALTOR®®, REALTORS®®) and/or the quality of services they provide (MLS®®, Multiple Listing Service®®)

Listing information last updated on October 15th, 2025 at 3:47am MDT