

## \$170,000 - N/A, Edmonton

MLS® #E4457388

**\$170,000**

2 Bedroom, 2.00 Bathroom, 797 sqft

Condo / Townhouse on 0.00 Acres

Canon Ridge, Edmonton, AB

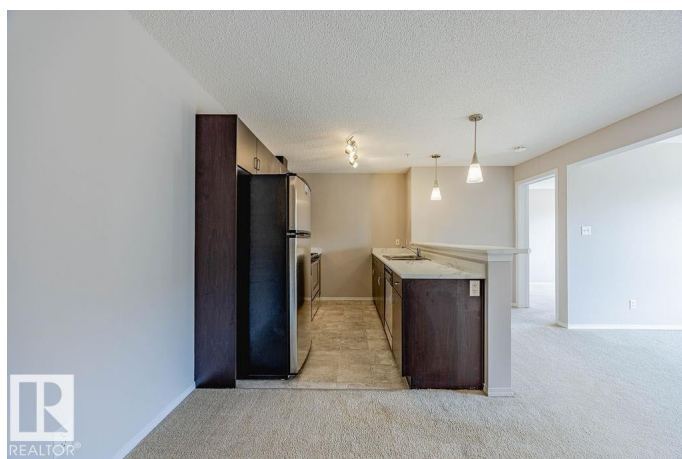
Welcome to Avenue at Hermitage. This 796 square foot 2 bedroom 2 bathroom condo features updated a galley kitchen with new laminate countertops, espresso cabinets, stainless steel appliances, and an eat-at peninsula. The primary bathroom has a walk-through closet to the four piece en-suite, and then across the living room is the second bedroom as well as the four piece main bathroom and laundry room. Close to Hermitage Park, and quick access to Victoria Trail as well as Yellowhead Trail.

Built in 2008

### Essential Information

MLS® #	E4457388
Price	\$170,000
Bedrooms	2
Bathrooms	2.00
Full Baths	2
Square Footage	797
Acres	0.00
Year Built	2008
Type	Condo / Townhouse
Sub-Type	Lowrise Apartment
Style	Single Level Apartment
Status	Active

### Community Information



Address	N/A
Area	Edmonton
Subdivision	Canon Ridge
City	Edmonton
County	ALBERTA
Province	AB
Postal Code	T5A 0P8

### **Amenities**

Amenities	Closet Organizers, Deck, Detectors Smoke, Intercom, Security Door, Storage-In-Suite, See Remarks
Parking	Stall

### **Interior**

Interior Features	ensuite bathroom
Appliances	Dishwasher-Built-In, Dryer, Microwave Hood Fan, Refrigerator, Stove-Electric, Washer, Window Coverings
Heating	Baseboard, Hot Water, Natural Gas
# of Stories	4
Stories	1
Has Basement	Yes
Basement	None, No Basement

### **Exterior**

Exterior	Wood, Vinyl
Exterior Features	Playground Nearby, Public Transportation, See Remarks
Roof	Asphalt Shingles
Construction	Wood, Vinyl
Foundation	Concrete Perimeter

### **Additional Information**

Date Listed	September 9th, 2025
Days on Market	4
Zoning	Zone 35
Condo Fee	\$487

DATA IS DEEMED RELIABLE BUT IS NOT GUARANTEED ACCURATE BY THE REALTORS® ASSOCIATION OF EDMONTON. COPYRIGHT 2025 BY THE REALTORS® ASSOCIATION OF EDMONTON. ALL RIGHTS RESERVED. Trademarks are owned or controlled by the Canadian Real Estate Association (CREA) and identify real estate professionals who are members of CREA (REALTOR®, REALTORS®) and/or the quality of services they provide (MLS®, Multiple Listing Service®)

Listing information last updated on September 13th, 2025 at 4:32am MDT