

Courtesy Of Rishab Sachdeva Of Initia Real Estate

## **\$429,900 - 2637 Maple Way, Edmonton**

MLS® #E4454979

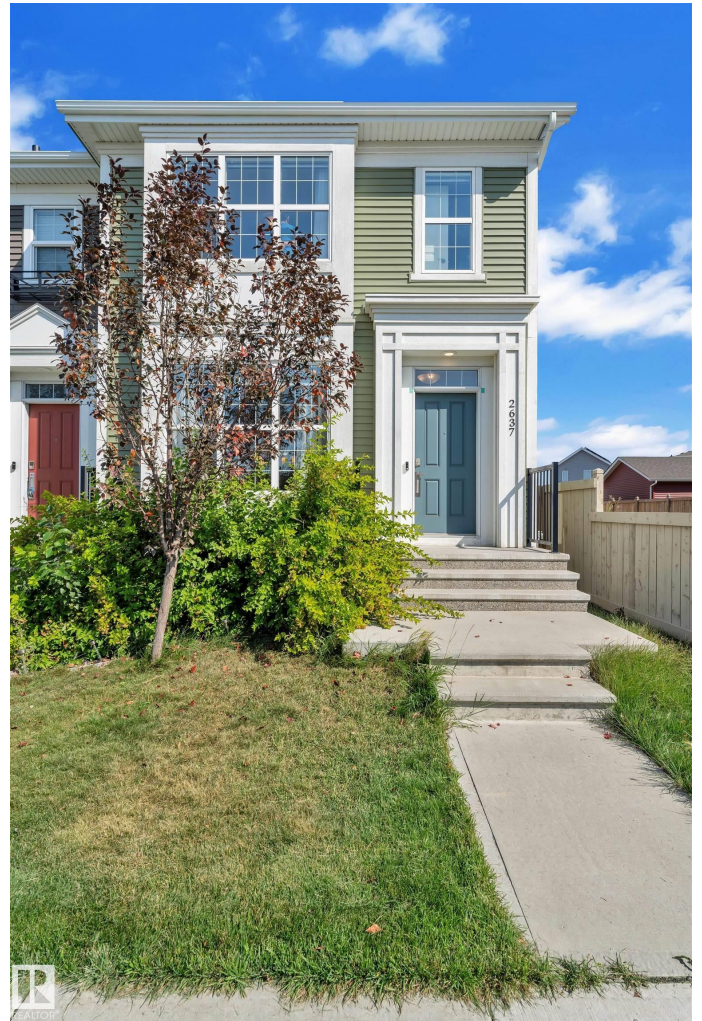
**\$429,900**

3 Bedroom, 2.50 Bathroom, 1,454 sqft

Single Family on 0.00 Acres

Maple Crest, Edmonton, AB

Welcome to this beautifully maintained corner unit home with no condo fees in the sought-after community of Maple Crest. This property offers numerous upgrades including central air conditioning, an electric fireplace, a gas stove, a gas line for BBQ on the deck, and an insulated double detached garage. The main floor boasts a bright and spacious living area, a dining space perfect for family gatherings, and a functional U-shaped kitchen with ample cabinetry and storage. Upstairs, you'll find three generously sized bedrooms and two full bathrooms, providing comfort and convenience for the whole family. This move-in ready home comes complete with all appliances, a fully landscaped yard, deck, fencing, and double detached garage. Located close to shopping, restaurants, movie theatres, coffee shops, schools, playgrounds, and plazas, this home offers the perfect blend of comfort and convenience, 1 minute to bus stop



Built in 2017

### **Essential Information**

MLS® #	E4454979
Price	\$429,900
Bedrooms	3
Bathrooms	2.50

Full Baths 2  
 Half Baths 1  
 Square Footage 1,454  
 Acres 0.00  
 Year Built 2017  
 Type Single Family  
 Sub-Type Residential Attached  
 Style 2 Storey  
 Status Active

**Community Information**

Address 2637 Maple Way  
 Area Edmonton  
 Subdivision Maple Crest  
 City Edmonton  
 County ALBERTA  
 Province AB  
 Postal Code T6T 2E9

**Amenities**

Amenities On Street Parking, Air Conditioner, Ceiling 9 ft., Deck, Detectors Smoke,  
 Hot Wtr Tank-Energy Star, Stove-Gas, Washer-Dryer, Windows-Double, Wtr Heating  
 Parking Double Garage Detached

**Interior**

Interior Features ensuite bathroom  
 Appliances Air Conditioning-Central, All Gas, Dishwasher, Dryer, Garage Control, G  
 Refrigerator, Stove-Gas, Washer-Dryer  
 Heating Forced Air-1, Natural Gas  
 Fireplace Yes  
 Fireplaces Wall Mount  
 Stories 2  
 Has Basement Yes  
 Basement Full, Unfinished

**Exterior**

Exterior Wood, Vinyl



Exterior Features	Corner Lot, Fenced, Golf Nearby, Landscaped, Playground Nearby, Schools, Shopping Nearby
Roof	Asphalt Shingles
Construction	Wood, Vinyl
Foundation	Concrete Perimeter

### **Additional Information**

Date Listed	August 28th, 2025
Days on Market	6
Zoning	Zone 30

DATA IS DEEMED RELIABLE BUT IS NOT GUARANTEED ACCURATE BY THE REALTORS® ASSOCIATION OF EDMONTON. COPYRIGHT 2025 BY THE REALTORS® ASSOCIATION OF EDMONTON. ALL RIGHTS RESERVED. Trademarks are owned or controlled by the Canadian Real Estate Association (CREA) and identify real estate professionals who are members of CREA (REALTOR®, REALTORS®) and/or the quality of services they provide (MLS®, Multiple Listing Service®)

Listing information last updated on September 3rd, 2025 at 6:02pm MDT