

## \$735,032 - 231 61 Festival Way, Sherwood Park

MLS® #E4447797

**\$735,032**

2 Bedroom, 2.00 Bathroom, 1,323 sqft  
Condo / Townhouse on 0.00 Acres

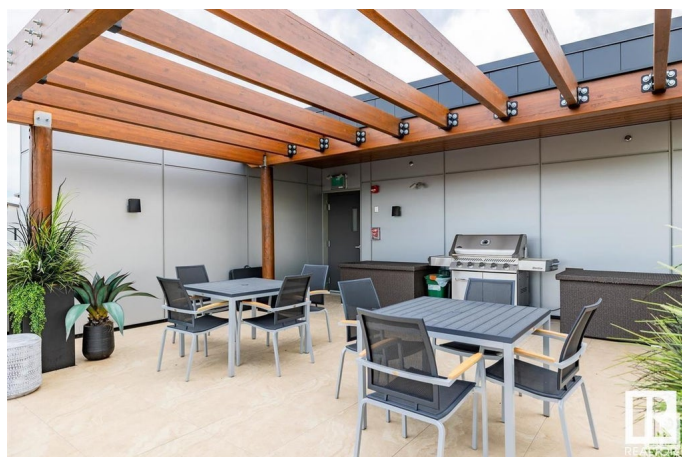
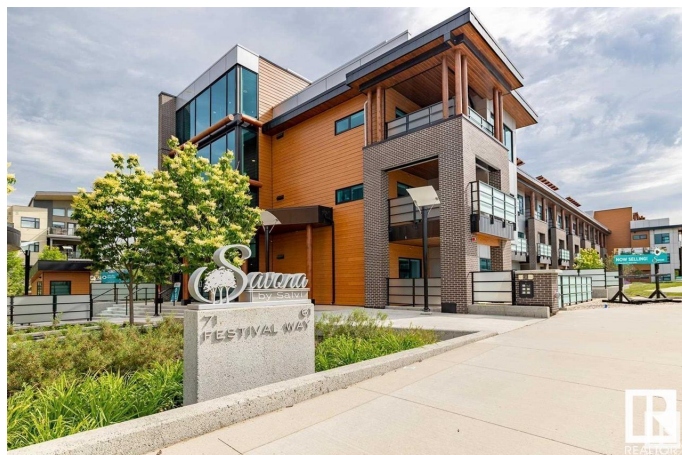
Centre In The Park, Sherwood Park, AB

LUXURY CONDO LIVING in the heart of Sherwood Park! SALVI Group presents... SAVONA at Centre in the Park, offering an impressive variety of suite designs ranging from a 745 SF 1 bedroom to 1730 SF 2 bedroom/den. This 1417 SF "ROMA" features 2 bedrooms, den, 2 full bathrooms, large kitchen with eating bar, open concept kitchen/living/dining space, in-suite laundry & private deck. All units c/w a stainless steel appliance package, AC, window coverings, custom built cabinetry, QUARTZ countertops, HARDWOOD & TILE flooring. High end finishing & craftsmanship throughout, as to be expected from the SALVI name. Also included; underground SECURED parking/storage, access to fitness studio & car wash bay. AMAZING LOCATION - walking distance to restaurants, shopping, Festival Place & close to all lifestyle amenities!

Built in 2019

### Essential Information

|                |           |
|----------------|-----------|
| MLS® #         | E4447797  |
| Price          | \$735,032 |
| Bedrooms       | 2         |
| Bathrooms      | 2.00      |
| Full Baths     | 2         |
| Square Footage | 1,323     |



|            |                        |
|------------|------------------------|
| Acres      | 0.00                   |
| Year Built | 2019                   |
| Type       | Condo / Townhouse      |
| Sub-Type   | Lowrise Apartment      |
| Style      | Single Level Apartment |
| Status     | Active                 |

### Community Information

|             |                     |
|-------------|---------------------|
| Address     | 231 61 Festival Way |
| Area        | Sherwood Park       |
| Subdivision | Centre In The Park  |
| City        | Sherwood Park       |
| County      | ALBERTA             |
| Province    | AB                  |
| Postal Code | T8A 4Z1             |

### Amenities

|           |                                      |
|-----------|--------------------------------------|
| Amenities | Air Conditioner, Deck, Exercise Room |
| Parking   | Underground                          |

### Interior

|                   |  |
|-------------------|--|
| Interior Features | ensuite bathroom   |
| Appliances        | Dishwasher-Built-In, Dryer, Refrigerator, Stove-Electric, Washer |
| Heating           | Heat Pump, Geo Thermal   |
| # of Stories      | 4  |
| Stories           | 4  |
| Has Basement      | Yes  |
| Basement          | None, No Basement  |

### Exterior

|                   |   |
|-------------------|---|
| Exterior          | Wood, Hardie Board Siding   |
| Exterior Features | Golf Nearby, Landscaped, Park/Reserve, Picnic Area, Shopping Nearby |
| Roof              | EPDM Membrane   |
| Construction      | Wood, Hardie Board Siding   |
| Foundation        | Concrete Perimeter  |

### Additional Information

|                |                 |
|----------------|-----------------|
| Date Listed    | July 15th, 2025 |
| Days on Market | 1               |

|           |         |
|-----------|---------|
| Zoning    | Zone 25 |
| Condo Fee | \$624   |

DATA IS DEEMED RELIABLE BUT IS NOT GUARANTEED ACCURATE BY THE REALTORS® ASSOCIATION OF EDMONTON. COPYRIGHT 2025 BY THE REALTORS® ASSOCIATION OF EDMONTON. ALL RIGHTS RESERVED. Trademarks are owned or controlled by the Canadian Real Estate Association (CREA) and identify real estate professionals who are members of CREA (REALTOR®, REALTORS®) and/or the quality of services they provide (MLS®, Multiple Listing Service®)

Listing information last updated on July 16th, 2025 at 5:17am MDT