

\$998,000 - 14712 Park Drive, Edmonton

MLS® #E4446658

\$998,000

4 Bedroom, 3.00 Bathroom, 1,849 sqft

Single Family on 0.00 Acres

Parkview, Edmonton, AB

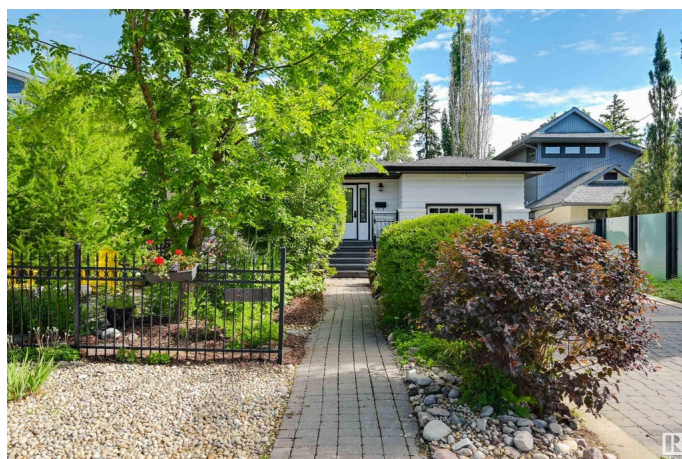
Welcome to this one-of-a-kind bungalow oasis nestled in one of Edmonton's most coveted locations, backing directly onto the ravine. Surrounded by nature, this lovingly upgraded home offers peace, privacy, and timeless style. Step inside to discover a thoughtfully designed layout featuring 2 spacious bedrooms + a den & 2 full bathrooms on the main floor. The heart of the home is the expansive great room, showcasing an open-concept chef's kitchen with high-end appliances, custom cabinetry, & an oversized island, perfect for entertaining. The adjoining dining room, bathed in natural light from skylights, & the cozy living room with a fireplace all boast breathtaking views into the ravine through massive windows that blur the line between indoors & out. Downstairs, the fully finished lower level offers endless possibilities with a large bedroom, a deluxe bathroom, a private gym, & a versatile bonus room ideal for media, hobbies, or guests. Rare opportunity to own a luxurious retreat in the heart of the city.

Built in 1957

Essential Information

MLS® # E4446658

Price \$998,000



Bedrooms	4
Bathrooms	3.00
Full Baths	3
Square Footage	1,849
Acres	0.00
Year Built	1957
Type	Single Family
Sub-Type	Detached Single Family
Style	Bungalow
Status	Active

Community Information

Address	14712 Park Drive
Area	Edmonton
Subdivision	Parkview
City	Edmonton
County	ALBERTA
Province	AB
Postal Code	T5R 5V4

Amenities

Amenities	Patio
Parking	Single Garage Detached

Interior

Appliances	Dishwasher-Built-In, Dryer, Hood Fan, Refrigerator, Stove-Electric, Washer, Window Coverings
Heating	Forced Air-1, Natural Gas
Fireplace	Yes
Fireplaces	None
Stories	2
Has Basement	Yes
Basement	Full, Finished

Exterior

Exterior	Wood, Brick
Exterior Features	Fenced, Landscaped, Park/Reserve, Ravine View, Schools, Shopping Nearby, Treed Lot
Roof	Asphalt Shingles

Construction	Wood, Brick
Foundation	Concrete Perimeter

Additional Information

Date Listed	July 9th, 2025
Days on Market	3
Zoning	Zone 10

DATA IS DEEMED RELIABLE BUT IS NOT GUARANTEED ACCURATE BY THE REALTORS® ASSOCIATION OF EDMONTON. COPYRIGHT 2025 BY THE REALTORS® ASSOCIATION OF EDMONTON. ALL RIGHTS RESERVED.Trademarks are owned or controlled by the Canadian Real Estate Association (CREA) and identify real estate professionals who are members of CREA (REALTOR®, REALTORS®) and/or the quality of services they provide (MLS®, Multiple Listing Service®)

Listing information last updated on July 12th, 2025 at 12:17am MDT