

\$239,900 - 238 6076 Schonsee Way, Edmonton

MLS® #E4442667

\$239,900

2 Bedroom, 2.00 Bathroom, 918 sqft

Condo / Townhouse on 0.00 Acres

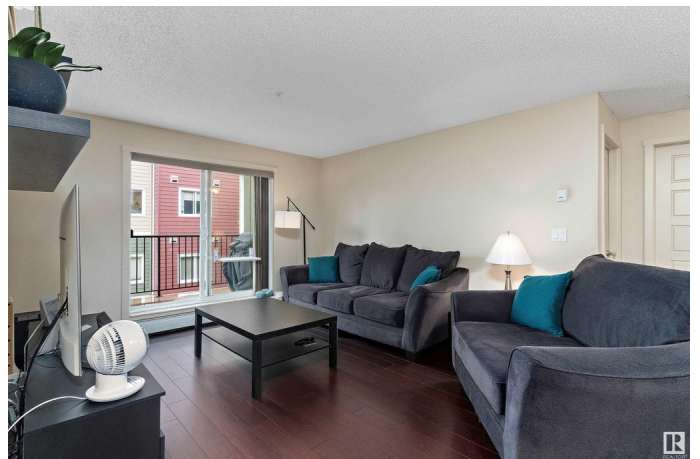
Schonsee, Edmonton, AB

Beautiful 2 bedroom, 2 bathroom condo located on the 2nd floor of the Shorewinds. Open, spacious floor plan with the bedrooms on opposite sides of the home. Great for privacy and solitude. Primary bedroom comes with a walk through closet, 3 piece ensuite including a walk-in shower. The home also includes an underground parking stall(very close to the exit stairs), laminate flooring, all appliances, window coverings, in-suite laundry with storage and a balcony with a natural gas outlet for a BBQ. The kitchen has plenty of kitchen cabinets with a breakfast bar, and a large area for a dining room table. Condo is pet friendly with board approval. Great location, close to all amenities.

Built in 2013

Essential Information

MLS® #	E4442667
Price	\$239,900
Bedrooms	2
Bathrooms	2.00
Full Baths	2
Square Footage	918
Acres	0.00
Year Built	2013
Type	Condo / Townhouse



Sub-Type	Lowrise Apartment
Style	Single Level Apartment
Status	Active

Community Information

Address	238 6076 Schonsee Way
Area	Edmonton
Subdivision	Schonsee
City	Edmonton
County	ALBERTA
Province	AB
Postal Code	T5Z 0K8

Amenities

Amenities	Deck, Exercise Room, Parking-Visitor, Social Rooms, Natural Gas BBQ Hookup
Parking Spaces	1
Parking	Heated, Underground

Interior

Interior Features	ensuite bathroom
Appliances	Dishwasher-Built-In, Dryer, Microwave Hood Fan, Refrigerator, Stove-Electric, Washer
Heating	Hot Water, Natural Gas
# of Stories	4
Stories	1
Has Basement	Yes
Basement	None, No Basement

Exterior

Exterior	Wood, Stone, Vinyl
Exterior Features	Public Transportation, Schools, Shopping Nearby
Roof	Asphalt Shingles
Construction	Wood, Stone, Vinyl
Foundation	Concrete Perimeter

Additional Information

Date Listed	June 16th, 2025
Days on Market	18

Zoning	Zone 28
Condo Fee	\$408

DATA IS DEEMED RELIABLE BUT IS NOT GUARANTEED ACCURATE BY THE REALTORS® ASSOCIATION OF EDMONTON. COPYRIGHT 2025 BY THE REALTORS® ASSOCIATION OF EDMONTON. ALL RIGHTS RESERVED. Trademarks are owned or controlled by the Canadian Real Estate Association (CREA) and identify real estate professionals who are members of CREA (REALTOR®, REALTORS®) and/or the quality of services they provide (MLS®, Multiple Listing Service®)

Listing information last updated on July 4th, 2025 at 1:03pm MDT