

\$849,800 - 24 Blue Quill Crescent, Edmonton

MLS® #E4442384

\$849,800

5 Bedroom, 3.00 Bathroom, 2,417 sqft

Single Family on 0.00 Acres

Blue Quill Estates, Edmonton, AB

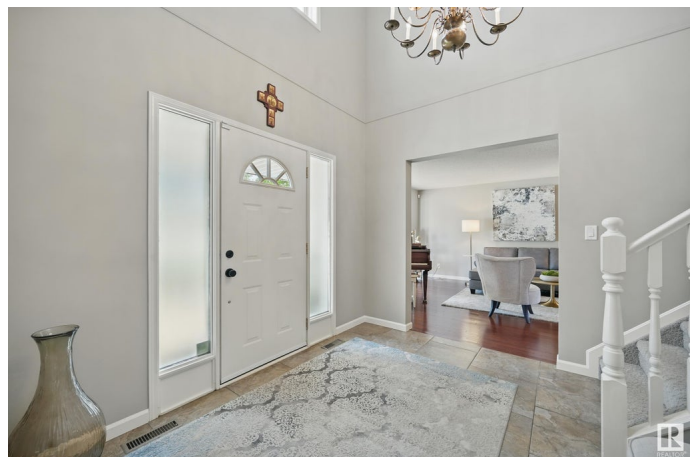
Welcome to this charming 2-storey home in the heart of Blue Quill Estates! Step into a bright foyer with an open-to-below staircase and a sunlit sitting room with a bay window, leading to a formal dining area. The re-modeled and fully renovated white kitchen boasts quartz counters, a stylish backsplash, and a cozy breakfast nook that flows into a sunken living room with a wood-burning fireplace. The main floor also offers a laundry room with sink, mudroom, and 2-pc bath. Upstairs features 4 BEDROOMS, including a spacious primary suite with jetted tub ensuite, three additional bedrooms, and a 4-pc bath. The basement includes a rec room, living space, bedroom, bathroom, and ample storage. Perfect for a growing family. Step outside into your WEST FACING private backyard oasis—lush landscaping, mature trees, a HUGE deck, hot tub, gas bbq hook up, and abundant greenspace. Located near top-rated schools, parks, walking trails, Whitemud Drive, South Edmonton Common, and the Derrick Golf & Winter Club.

Built in 1985

Essential Information

MLS® # E4442384

Price \$849,800



Bedrooms	5
Bathrooms	3.00
Full Baths	2
Half Baths	2
Square Footage	2,417
Acres	0.00
Year Built	1985
Type	Single Family
Sub-Type	Detached Single Family
Style	2 Storey
Status	Active

Community Information

Address	24 Blue Quill Crescent
Area	Edmonton
Subdivision	Blue Quill Estates
City	Edmonton
County	ALBERTA
Province	AB
Postal Code	T6J 6C2

Amenities

Amenities	Air Conditioner, Deck, Hot Tub
Parking Spaces	4
Parking	Double Garage Attached

Interior

Interior Features	ensuite bathroom
Appliances	Air Conditioning-Central, Dishwasher-Built-In, Dryer, Microwave Hood Fan, Stove-Electric, Washer, Refrigerators-Two, Hot Tub
Heating	Forced Air-1, Natural Gas
Fireplace	Yes
Fireplaces	Insert
Stories	3
Has Basement	Yes
Basement	Full, Finished

Exterior

Exterior	Wood, Vinyl
----------	-------------

Exterior Features	Fenced, Golf Nearby, Landscaped, Playground Nearby, Public Transportation, Schools, Shopping Nearby, Ski Hill Nearby
Roof	Asphalt Shingles
Construction	Wood, Vinyl
Foundation	Concrete Perimeter

School Information

Elementary	Westbrook School
Middle	Vernon Barford School
High	Harry Ainlay School

Additional Information

Date Listed	June 13th, 2025
Days on Market	2
Zoning	Zone 16

DATA IS DEEMED RELIABLE BUT IS NOT GUARANTEED ACCURATE BY THE REALTORS® ASSOCIATION OF EDMONTON. COPYRIGHT 2025 BY THE REALTORS® ASSOCIATION OF EDMONTON. ALL RIGHTS RESERVED.Trademarks are owned or controlled by the Canadian Real Estate Association (CREA) and identify real estate professionals who are members of CREA (REALTOR®, REALTORS®) and/or the quality of services they provide (MLS®, Multiple Listing Service®)

Listing information last updated on June 14th, 2025 at 11:32pm MDT