

## \$529,900 - 81 Silverstone Drive, Stony Plain

MLS® #E4441576

**\$529,900**

3 Bedroom, 3.50 Bathroom, 2,089 sqft

Single Family on 0.00 Acres

Silverstone, Stony Plain, AB

Move-in ready! This stunning over 2000 sq ft 3-bed, 3-bath two-storey features a modern exterior with beautiful green vinyl complemented by cream and stone accents. Fully built and ready for its new owner, this home is crafted with luxury, offering upscale finishes at an entry-level price. You'll find 9' ceilings on the main floor, a soaring 18'™ entry, a main floor den, upstairs family room, walk-through pantry with a microwave outlet and custom shelving, electric fireplace, and two primary suites. The kitchen showcases a white-veined quartz island with an undermount sink, complemented by two-tone cabinetry in white and wood finishes with gold hardware and gorgeous lighting. Luxury vinyl flooring flows through the main living areas. Highlights include a stylish wood and metal handrail, upstairs laundry, built-in closet organizers, large bedrooms, and a separate side entrance. Located in Silverstone—a welcoming community with trails, schools, and big-city amenities with small-town charm.

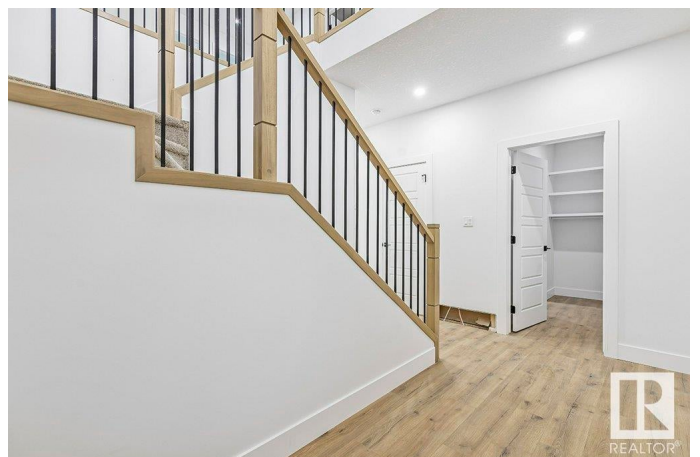
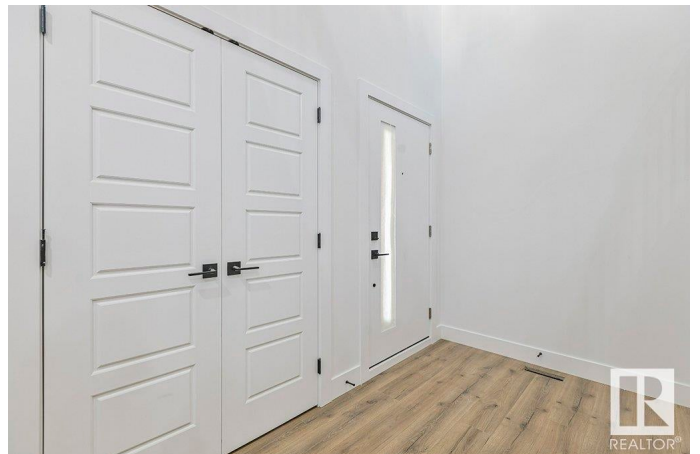
Built in 2024

### Essential Information

MLS® # E4441576

Price \$529,900

Bedrooms 3



Bathrooms	3.50
Full Baths	3
Half Baths	1
Square Footage	2,089
Acres	0.00
Year Built	2024
Type	Single Family
Sub-Type	Detached Single Family
Style	2 Storey
Status	Active

### Community Information

Address	81 Silverstone Drive
Area	Stony Plain
Subdivision	Silverstone
City	Stony Plain
County	ALBERTA
Province	AB
Postal Code	T7Y 0E8

### Amenities

Amenities	Ceiling 9 ft., Closet Organizers, No Animal Home, No Smoking Home, See Remarks, HRV System, Natural Gas BBQ Hookup, 9 ft. Basement Ceiling
Parking Spaces	4
Parking	Double Garage Attached

### Interior

Interior Features	ensuite bathroom
Appliances	Garage Control, Garage Opener, Refrigerator
Heating	Forced Air-1, Natural Gas
Fireplace	Yes
Fireplaces	Remote Control
Stories	2
Has Basement	Yes
Basement	Full, Unfinished

### Exterior

Exterior	Wood, Stone, Vinyl
----------	--------------------

Exterior Features	Playground Nearby, Schools, See Remarks
Roof	Asphalt Shingles
Construction	Wood, Stone, Vinyl
Foundation	Concrete Perimeter

### **School Information**

Elementary	Ecole Meridian Heights Sch
Middle	Westview School
High	Connections For Learning

### **Additional Information**

Date Listed	June 10th, 2025
Days on Market	5
Zoning	Zone 91

DATA IS DEEMED RELIABLE BUT IS NOT GUARANTEED ACCURATE BY THE REALTORS® ASSOCIATION OF EDMONTON. COPYRIGHT 2025 BY THE REALTORS® ASSOCIATION OF EDMONTON. ALL RIGHTS RESERVED. Trademarks are owned or controlled by the Canadian Real Estate Association (CREA) and identify real estate professionals who are members of CREA (REALTOR®, REALTORS®) and/or the quality of services they provide (MLS®, Multiple Listing Service®)

Listing information last updated on June 14th, 2025 at 11:02pm MDT