

## \$208,800 - 604 10238 103 Street, Edmonton

MLS® #E4441200

**\$208,800**

1 Bedroom, 1.00 Bathroom, 444 sqft

Condo / Townhouse on 0.00 Acres

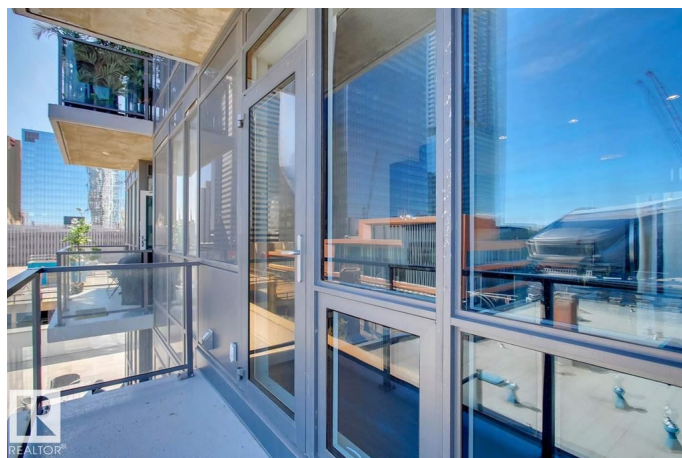
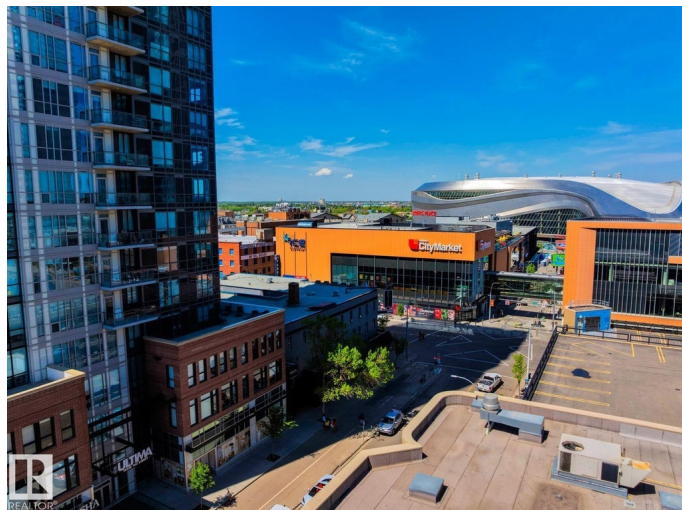
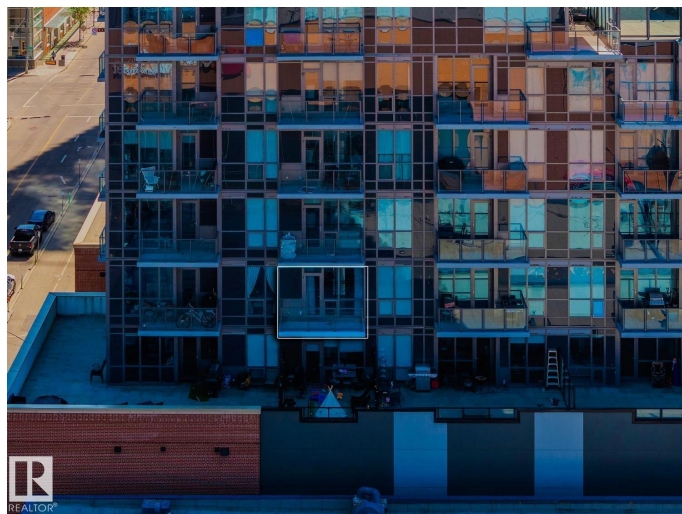
Downtown (Edmonton), Edmonton, AB

THE ULTIMA - in the heart of the YEG ICE District. Can you imagine walking to work every day & living the ultimate downtown lifestyle! Over 444sqft of finished living space â€” 1 BEDROOM â€” LIVING ROOM, KITCHEN, DINING AREA, 3 piece bathroom, in-suite LAUNDRY, storage & UNDERGROUND PARKING stall all included. Step inside this extremely well-designed condo & you will love the fully equipped kitchen with ample storage & prep space - open to kitchen is the dining area. Sit & relax in the living room enjoying the downtown views. Through the patio doors â€” the spacious outdoor living space has views of all city life. Back inside the master bedroom is good size with additional storage â€” laundry & 3 piece bath complete this condo. Walk to every amenity â€” restaurants, cafes, movies, concerts & sporting events!

Built in 2016

### Essential Information

MLS® #	E4441200
Price	\$208,800
Bedrooms	1
Bathrooms	1.00
Full Baths	1
Square Footage	444



Acres	0.00
Year Built	2016
Type	Condo / Townhouse
Sub-Type	Apartment High Rise
Style	Single Level Apartment
Status	Active

### Community Information

Address	604 10238 103 Street
Area	Edmonton
Subdivision	Downtown (Edmonton)
City	Edmonton
County	ALBERTA
Province	AB
Postal Code	T5J 0G6

### Amenities

Amenities	Air Conditioner, Ceiling 9 ft., Detectors Smoke, Exercise Room, Intercom, No Smoking Home, Parking-Visitor, Party Room, Secured Parking, Security Door
Parking Spaces	1
Parking	Heated, Underground

### Interior

Appliances	Air Conditioning-Central, Dishwasher-Built-In, Dryer, Garage Opener, Oven-Microwave, Refrigerator, Stove-Electric, Washer, Window Coverings
Heating	Heat Pump, Natural Gas
# of Stories	32
Stories	1
Has Basement	Yes
Basement	None, No Basement

### Exterior

Exterior	Concrete, Brick, Metal
Exterior Features	Public Transportation, Schools, Shopping Nearby, View City, View Downtown
Roof	EPDM Membrane
Construction	Concrete, Brick, Metal
Foundation	Concrete Perimeter

**School Information**

Elementary	Garneau School
Middle	McKernan School
High	Victoria School

**Additional Information**

Date Listed	June 8th, 2025
Days on Market	71
Zoning	Zone 12
Condo Fee	\$332

DATA IS DEEMED RELIABLE BUT IS NOT GUARANTEED ACCURATE BY THE REALTORS® ASSOCIATION OF EDMONTON. COPYRIGHT 2025 BY THE REALTORS® ASSOCIATION OF EDMONTON. ALL RIGHTS RESERVED.Trademarks are owned or controlled by the Canadian Real Estate Association (CREA) and identify real estate professionals who are members of CREA (REALTOR®, REALTORS®) and/or the quality of services they provide (MLS®, Multiple Listing Service®)

Listing information last updated on August 18th, 2025 at 1:47am MDT