

# \$219,000 - 52 Belmead Gardens Gardens, Edmonton

MLS® #E4439727

**\$219,000**

3 Bedroom, 1.50 Bathroom, 1,066 sqft  
Condo / Townhouse on 0.00 Acres

Belmead, Edmonton, AB

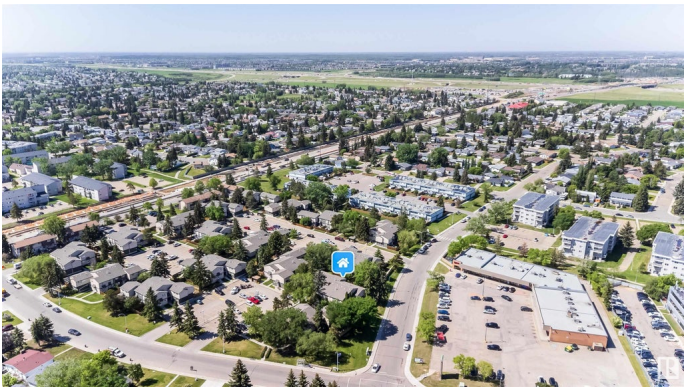
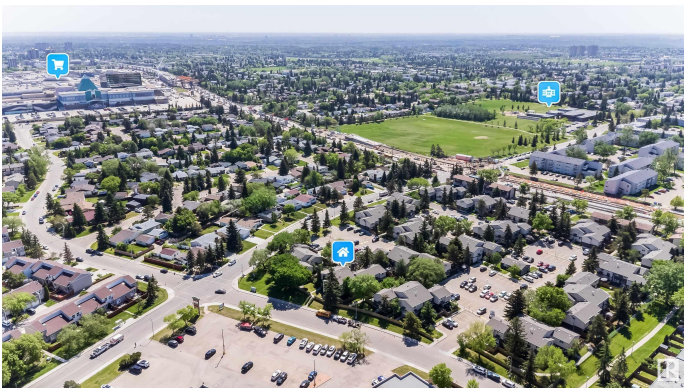
Spacious 3-bedroom townhome in sought-after Belmead, West Edmonton! Offering over 1000 sqft, this well-maintained home features laminate flooring on the main and cozy carpet upstairs. Includes 1.5 baths and a partially finished basement with an extra room for added space. Walking distance to WEM, near schools, public transit, and quick access to HWY 216. Perfect for first-time buyers or investors!

Built in 1975

## Essential Information

MLS® #	E4439727
Price	\$219,000
Bedrooms	3
Bathrooms	1.50
Full Baths	1
Half Baths	1
Square Footage	1,066
Acres	0.00
Year Built	1975
Type	Condo / Townhouse
Sub-Type	Townhouse
Style	2 Storey
Status	Active

## Community Information



Address	52 Belmead Gardens Gardens
Area	Edmonton
Subdivision	Belmead
City	Edmonton
County	ALBERTA
Province	AB
Postal Code	T5T 1J1

### **Amenities**

Amenities	Detectors Smoke, No Animal Home, No Smoking Home
Parking	Stall

### **Interior**

Appliances	Dryer, Refrigerator, Stove-Electric, Washer
Heating	Forced Air-1, Natural Gas
Stories	2
Has Basement	Yes
Basement	Full, Partially Finished

### **Exterior**

Exterior	Wood, Stucco
Exterior Features	Fenced, Flat Site, Golf Nearby, Landscaped, Playground Nearby, Public Transportation, Schools, Shopping Nearby, See Remarks
Roof	Asphalt Shingles
Construction	Wood, Stucco
Foundation	Concrete Perimeter

### **Additional Information**

Date Listed	May 31st, 2025
Days on Market	15
Zoning	Zone 20
Condo Fee	\$342

DATA IS DEEMED RELIABLE BUT IS NOT GUARANTEED ACCURATE BY THE REALTORS® ASSOCIATION OF EDMONTON. COPYRIGHT 2025 BY THE REALTORS® ASSOCIATION OF EDMONTON. ALL RIGHTS RESERVED. Trademarks are owned or controlled by the Canadian Real Estate Association (CREA) and identify real estate professionals who are members of CREA (REALTOR®, REALTORS®) and/or the quality of services they provide (MLS®, Multiple Listing Service®)

Listing information last updated on June 14th, 2025 at 11:17pm MDT