

\$935,000 - 3532 Keswick Boulevard, Edmonton

MLS® #E4438422

\$935,000

5 Bedroom, 4.50 Bathroom, 2,826 sqft
Single Family on 0.00 Acres

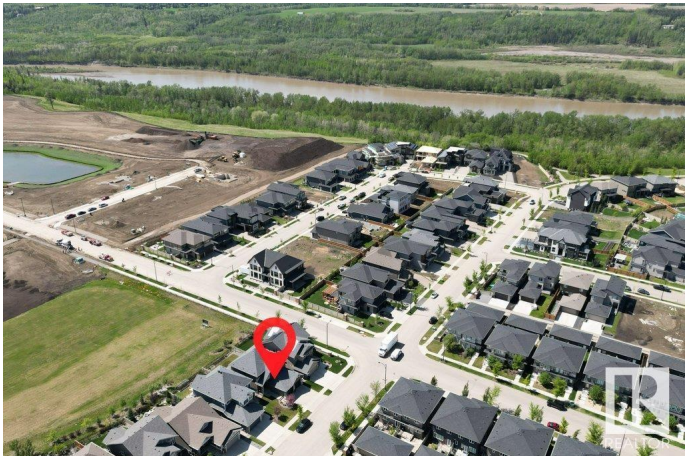
Keswick Area, Edmonton, AB

Welcome to this stunning custom-built 2-storey by Hillview Master Builder in prestigious Keswick on the River. This 2,862 sq ft plus 1358 sf basement home backs onto a tranquil park and offers 5 bedrooms, including one with an ensuite on the main floor, and a fully finished basement for added living space. Enjoy 10' ceilings, an open-concept great room with a feature fireplace, and a chef's kitchen with high-end finishes and a large island. The upper level features a spacious bonus room, luxurious primary suite with spa-inspired ensuite, and two additional bedrooms. Thoughtfully upgraded throughout with elegant details, this home combines style, comfort, and function. Situated on one of the community's most desirable boulevards, with quick access to trails, schools, and amenities—this is refined living in one of Edmonton's top neighbourhoods.

Built in 2017

Essential Information

MLS® #	E4438422
Price	\$935,000
Bedrooms	5
Bathrooms	4.50
Full Baths	4
Half Baths	1



Square Footage	2,826
Acres	0.00
Year Built	2017
Type	Single Family
Sub-Type	Detached Single Family
Style	2 Storey
Status	Active

Community Information

Address	3532 Keswick Boulevard
Area	Edmonton
Subdivision	Keswick Area
City	Edmonton
County	ALBERTA
Province	AB
Postal Code	T6W 0S5

Amenities

Amenities	Detectors Smoke, Exterior Walls- 2"x6", Patio
Parking Spaces	4
Parking	Double Garage Attached, Insulated, Over Sized

Interior

Interior Features	ensuite bathroom
Appliances	Dishwasher-Built-In, Dryer, Garage Control, Garage Opener, Hood Fan, Oven-Built-In, Oven-Microwave, Refrigerator, Stove-Countertop Gas, Washer, Window Coverings
Heating	Forced Air-1, Natural Gas
Fireplace	Yes
Fireplaces	Tile Surround
Stories	3
Has Basement	Yes
Basement	Full, Finished

Exterior

Exterior	Wood, Fiber Cement, Stone
Exterior Features	Airport Nearby, Fenced, Flat Site, Golf Nearby, Landscaped, Low Maintenance Landscape, Park/Reserve, Playground Nearby, Shopping Nearby

Roof	Asphalt Shingles
Construction	Wood, Fiber Cement, Stone
Foundation	Concrete Perimeter

Additional Information

Date Listed	May 24th, 2025
Days on Market	27
Zoning	Zone 56
HOA Fees	350
HOA Fees Freq.	Annually

DATA IS DEEMED RELIABLE BUT IS NOT GUARANTEED ACCURATE BY THE REALTORS® ASSOCIATION OF EDMONTON. COPYRIGHT 2025 BY THE REALTORS® ASSOCIATION OF EDMONTON. ALL RIGHTS RESERVED.Trademarks are owned or controlled by the Canadian Real Estate Association (CREA) and identify real estate professionals who are members of CREA (REALTOR®, REALTORS®) and/or the quality of services they provide (MLS®, Multiple Listing Service®)

Listing information last updated on June 20th, 2025 at 1:47am MDT