

## \$190,900 - 2 4245 139 Avenue, Edmonton

MLS® #E4437110

**\$190,900**

2 Bedroom, 2.00 Bathroom, 836 sqft

Condo / Townhouse on 0.00 Acres

Clareview Town Centre, Edmonton, AB

This spacious 800+ sqft, 2-bedroom, 2-bathroom main floor apartment offers a perfect blend of comfort and style, with elegant finishes and abundant natural light. Newly refreshed and fully painted. The thoughtfully designed kitchen is equipped with stainless steel appliances, generous counter space, & ample cabinetry to meet all your storage needs. The spacious living and dining area flows seamlessly, leading to a private outdoor patio. The primary bedroom features an en-suite bathroom for added privacy. The second bedroom is perfect for guests, a roommate, or a home office, with its own full bathroom just steps away. Additional highlights include in-suite laundry, low-maintenance laminate and tile flooring throughout (no carpet!), secure underground parking, and a separate storage unit. Concrete building. Save on utilities with condo fees covering heat, water, and electricity! A truly ideal home for a first time buyer, investor, or those looking for a convenient lifestyle!

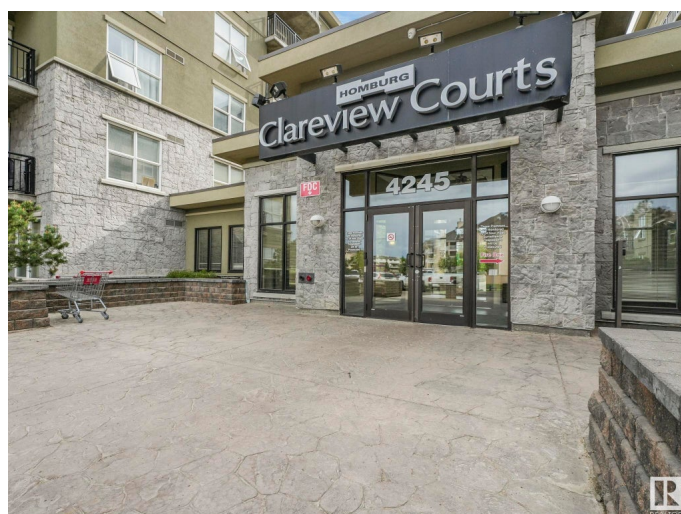
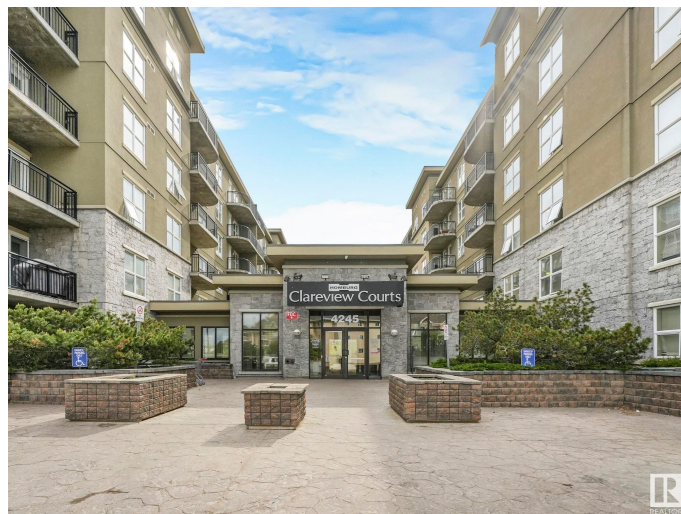
Built in 2005

### Essential Information

MLS® # E4437110

Price \$190,900

Bedrooms 2



Bathrooms	2.00
Full Baths	2
Square Footage	836
Acres	0.00
Year Built	2005
Type	Condo / Townhouse
Sub-Type	Lowrise Apartment
Style	Single Level Apartment
Status	Active

### Community Information

Address	2 4245 139 Avenue
Area	Edmonton
Subdivision	Clareview Town Centre
City	Edmonton
County	ALBERTA
Province	AB
Postal Code	T5Y 3E8

### Amenities

Amenities	Detectors Smoke, Exercise Room, Parking-Visitor, Security Door, Sprinkler System-Fire, Vinyl Windows
Parking	Heated, Parkade, Underground

### Interior

Interior Features	ensuite bathroom
Appliances	Dishwasher-Built-In, Dryer, Microwave Hood Fan, Refrigerator, Stove-Electric, Washer
Heating	Baseboard, Natural Gas
# of Stories	6
Stories	1
Has Basement	Yes
Basement	None, No Basement

### Exterior

Exterior	Concrete, Stucco
Exterior Features	Fenced, Landscaped, Public Transportation, Schools, Shopping Nearby
Roof	Concrete Tiles
Construction	Concrete, Stucco

Foundation                      Concrete Perimeter

**Additional Information**

Date Listed                      May 16th, 2025  
Days on Market                57  
Zoning                              Zone 35  
Condo Fee                        \$575

DATA IS DEEMED RELIABLE BUT IS NOT GUARANTEED ACCURATE BY THE REALTORS® ASSOCIATION OF EDMONTON. COPYRIGHT 2025 BY THE REALTORS® ASSOCIATION OF EDMONTON. ALL RIGHTS RESERVED.Trademarks are owned or controlled by the Canadian Real Estate Association (CREA) and identify real estate professionals who are members of CREA (REALTOR®, REALTORS®) and/or the quality of services they provide (MLS®, Multiple Listing Service®)  
Listing information last updated on July 12th, 2025 at 11:48am MDT