

\$350,000 - 57 1391 Starling Drive, Edmonton

MLS® #E4434901

\$350,000

3 Bedroom, 2.50 Bathroom, 1,582 sqft

Condo / Townhouse on 0.00 Acres

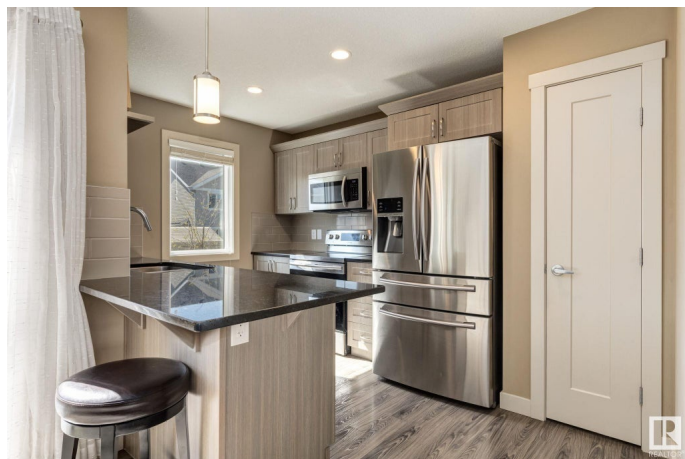
Starling, Edmonton, AB

Pride of ownership shines in this beautifully maintained townhouse featuring an open-concept main floor with durable vinyl plank flooring and plenty of natural light. The stylish kitchen is equipped with granite countertops, stainless steel appliances, and opens to spacious open concept living and dining areas, which feature a private balcony, perfect for relaxing or entertaining. Upstairs offers a full bathroom, and three spacious bedrooms, including a large primary suite complete with walk-in closet and private ensuite. The lower level offers a tandem double garage has been upgraded with drywall, taping, and paint, along with a clean, functional laundry/utility area. Access to scenic walking trails with lush ponds + quick connections to Ray Gibbon Drive and the Anthony Henday, makes commuting a breeze. Move-in ready and better than new â€” this home checks all the boxes!

Built in 2016

Essential Information

| | |
|------------|-----------|
| MLS® # | E4434901 |
| Price | \$350,000 |
| Bedrooms | 3 |
| Bathrooms | 2.50 |
| Full Baths | 2 |



| | |
|----------------|-------------------|
| Half Baths | 1 |
| Square Footage | 1,582 |
| Acres | 0.00 |
| Year Built | 2016 |
| Type | Condo / Townhouse |
| Sub-Type | Townhouse |
| Style | 2 Storey |
| Status | Active |

Community Information

| | |
|-------------|------------------------|
| Address | 57 1391 Starling Drive |
| Area | Edmonton |
| Subdivision | Starling |
| City | Edmonton |
| County | ALBERTA |
| Province | AB |
| Postal Code | T5S 0L3 |

Amenities

| | |
|----------------|--------------------------------|
| Amenities | Deck, Patio |
| Parking Spaces | 2 |
| Parking | Double Garage Attached, Tandem |

Interior

| | |
|-------------------|---------------------------------------------------------------------------------------------------------------------------------------|
| Interior Features | ensuite bathroom |
| Appliances | Dishwasher-Built-In, Dryer, Garage Control, Garage Opener, Microwave Hood Fan, Refrigerator, Stove-Electric, Washer, Window Coverings |
| Heating | Forced Air-1, Natural Gas |
| Stories | 3 |
| Has Basement | Yes |
| Basement | None, No Basement |

Exterior

| | |
|-------------------|----------------------------------------------------------------------------------|
| Exterior | Wood, Vinyl |
| Exterior Features | Golf Nearby, Landscaped, No Back Lane, No Through Road, Schools, Shopping Nearby |
| Roof | Asphalt Shingles |
| Construction | Wood, Vinyl |
| Foundation | Concrete Perimeter |

School Information

| | |
|------------|--------------------------|
| Elementary | D. Tho King/Annunciation |
| Middle | D. Tho King/St Tho More |
| High | Jasper Place |

Additional Information

| | |
|----------------|---------------|
| Date Listed | May 7th, 2025 |
| Days on Market | 4 |
| Zoning | Zone 59 |
| HOA Fees | 105 |
| HOA Fees Freq. | Annually |
| Condo Fee | \$287 |

DATA IS DEEMED RELIABLE BUT IS NOT GUARANTEED ACCURATE BY THE REALTORS® ASSOCIATION OF EDMONTON. COPYRIGHT 2025 BY THE REALTORS® ASSOCIATION OF EDMONTON. ALL RIGHTS RESERVED.Trademarks are owned or controlled by the Canadian Real Estate Association (CREA) and identify real estate professionals who are members of CREA (REALTOR®, REALTORS®) and/or the quality of services they provide (MLS®, Multiple Listing Service®)

Listing information last updated on May 11th, 2025 at 2:17am MDT