

\$400,000 - 15729 95 Avenue, Edmonton

MLS® #E4432533

\$400,000

4 Bedroom, 2.00 Bathroom, 1,164 sqft

Single Family on 0.00 Acres

Meadowlark Park (Edmonton), Edmonton, AB

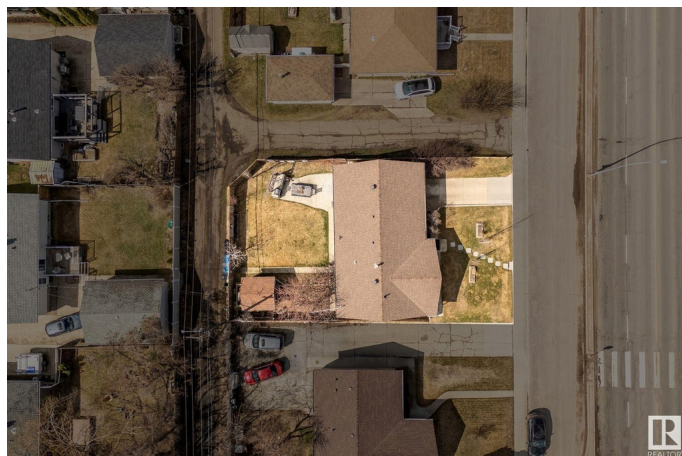
Welcome to the vibrant community of Meadowlark Park! This well-maintained 4 bedroom, 2 bathroom bungalow offers over 1100 sq ft of thoughtfully laid-out living space, making it the perfect place to call home. As you step inside, you're welcomed into a bright and spacious living room that effortlessly flows into the dining area. The large kitchen features stainless steel appliances, plenty of cabinetry, and expansive counter space for cooking and gathering. Down the hallway, you'll find the primary bedroom, two additional bedrooms, and a full 4pc bathroom. The fully finished basement provides even more room to spread out, with a massive rec room complete with a built-in bar, a 3pc bathroom, an additional bedroom, and a laundry room with extra storage. The single attached garage adds convenience, while the fully fenced backyard is perfect for kids, pets, gardening, or summer BBQs. Located just 5 minutes from West Edmonton Mall and close to schools, parks, transit, and all the amenities you could need.

Built in 1958

Essential Information

MLS® # E4432533

Price \$400,000



Bedrooms	4
Bathrooms	2.00
Full Baths	2
Square Footage	1,164
Acres	0.00
Year Built	1958
Type	Single Family
Sub-Type	Detached Single Family
Style	Bungalow
Status	Active

Community Information

Address	15729 95 Avenue
Area	Edmonton
Subdivision	Meadowlark Park (Edmonton)
City	Edmonton
County	ALBERTA
Province	AB
Postal Code	T5P 0A3

Amenities

Amenities	Off Street Parking, On Street Parking, Bar, Detectors Smoke, Vinyl Windows
Parking	Parking Pad Cement/Paved, Single Garage Attached

Interior

Appliances	Dishwasher-Built-In, Dryer, Hood Fan, Refrigerator, Stove-Electric, Washer, Window Coverings
Heating	Forced Air-1, Natural Gas
Stories	2
Has Basement	Yes
Basement	Full, Finished

Exterior

Exterior	Wood, Vinyl
Exterior Features	Back Lane, Fenced, Flat Site, Landscaped, Playground Nearby, Public Transportation, Schools, Shopping Nearby
Roof	Asphalt Shingles
Construction	Wood, Vinyl

Foundation Concrete Perimeter

Additional Information

Date Listed April 24th, 2025

Days on Market 3

Zoning Zone 22

DATA IS DEEMED RELIABLE BUT IS NOT GUARANTEED ACCURATE BY THE REALTORS® ASSOCIATION OF EDMONTON. COPYRIGHT 2025 BY THE REALTORS® ASSOCIATION OF EDMONTON. ALL RIGHTS RESERVED.Trademarks are owned or controlled by the Canadian Real Estate Association (CREA) and identify real estate professionals who are members of CREA (REALTOR®, REALTORS®) and/or the quality of services they provide (MLS®, Multiple Listing Service®)

Listing information last updated on April 27th, 2025 at 2:47am MDT