

# \$199,900 - 346 10636 120 Street, Edmonton

MLS® #E4432494

**\$199,900**

2 Bedroom, 2.00 Bathroom, 942 sqft  
Condo / Townhouse on 0.00 Acres

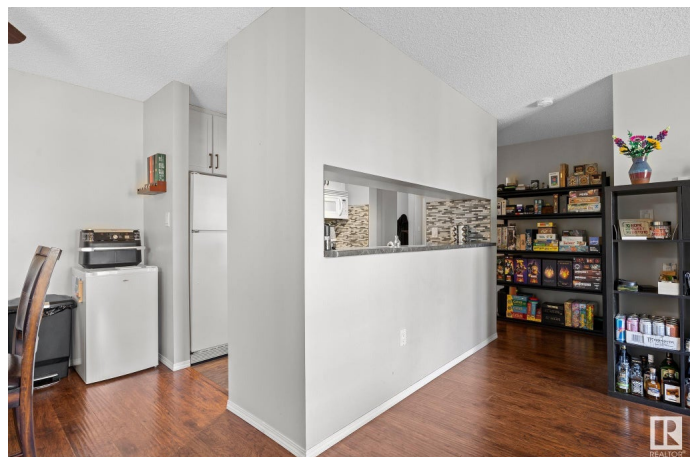
Queen Mary Park, Edmonton, AB

**GORGEOUS!!!** Possibly the best condo deal around for this 2 bed 2 full bath 941 sq ft beauty in The Pointe Uptown. This stunning corner unit has fantastic features including a renovated kitchen with white cabinets, new counters, silgranite sink, and custom backsplash. The primary features a walkthrough closet and 4 pce ensuite. the second bedroom (on the other side) is quite large too. Space is key in this one with plenty of storage, full dining area, and insuite laundry room. Outside the ample balcony faces the beautiful courtyard and is extra quiet. This condo couldn't be in a better location with Manchester Square next door and a quick walk to Unity Square and 124 St. This is the perfect starter home or an incredible investment property!

Built in 1993

## Essential Information

MLS® #	E4432494
Price	\$199,900
Bedrooms	2
Bathrooms	2.00
Full Baths	2
Square Footage	942
Acres	0.00
Year Built	1993



Type	Condo / Townhouse
Sub-Type	Lowrise Apartment
Style	Single Level Apartment
Status	Active

### Community Information

Address	346 10636 120 Street
Area	Edmonton
Subdivision	Queen Mary Park
City	Edmonton
County	ALBERTA
Province	AB
Postal Code	T5H 4L5

### Amenities

Amenities	Deck, No Smoking Home, Parking-Visitor, Security Door
Parking	Stall

### Interior

Interior Features	ensuite bathroom
Appliances	Dishwasher-Built-In, Dryer, Microwave Hood Fan, Refrigerator, Stove-Electric, Washer, Window Coverings
Heating	Hot Water, Natural Gas
# of Stories	4
Stories	1
Has Basement	Yes
Basement	None, No Basement

### Exterior

Exterior	Wood, Stucco
Exterior Features	Golf Nearby, Public Transportation, Schools, Shopping Nearby
Roof	Asphalt Shingles
Construction	Wood, Stucco
Foundation	Concrete Perimeter

### Additional Information

Date Listed	April 24th, 2025
Days on Market	3
Zoning	Zone 08

Condo Fee            \$479

DATA IS DEEMED RELIABLE BUT IS NOT GUARANTEED ACCURATE BY THE REALTORS® ASSOCIATION OF EDMONTON. COPYRIGHT 2025 BY THE REALTORS® ASSOCIATION OF EDMONTON. ALL RIGHTS RESERVED. Trademarks are owned or controlled by the Canadian Real Estate Association (CREA) and identify real estate professionals who are members of CREA (REALTOR®, REALTORS®) and/or the quality of services they provide (MLS®, Multiple Listing Service®)

Listing information last updated on April 27th, 2025 at 8:17am MDT