

\$474,900 - 71 Forest Drive, St. Albert

MLS® #E4432209

\$474,900

5 Bedroom, 2.00 Bathroom, 1,131 sqft

Single Family on 0.00 Acres

Forest Lawn (St. Albert), St. Albert, AB

Visit the Listing Brokerage (and/or listing REALTOR®) website to obtain additional information. 4 level split located in highly sought after mature area, well treed and close to parks, trails and schools. Hardwood floors in main living area, tile bathrooms newer carpet in lower level bedroom, large fenced yard loaded with trees and annual flowers and plants. Maintenance free deck, forever metal roof. Gas fireplace. Single car garage insulated and drywalled.

Built in 1972



Essential Information

MLS® #	E4432209
Price	\$474,900
Bedrooms	5
Bathrooms	2.00
Full Baths	2
Square Footage	1,131
Acres	0.00
Year Built	1972
Type	Single Family
Sub-Type	Detached Single Family
Style	4 Level Split
Status	Active

Community Information

Address 71 Forest Drive
Area St. Albert
Subdivision Forest Lawn (St. Albert)
City St. Albert
County ALBERTA
Province AB
Postal Code T8N 1V2

Amenities

Amenities Ceiling 9 ft., Crawl Space,
Ceiling, Vinyl Windows, Natu
Parking Spaces 1
Parking Single Garage Attached

Interior

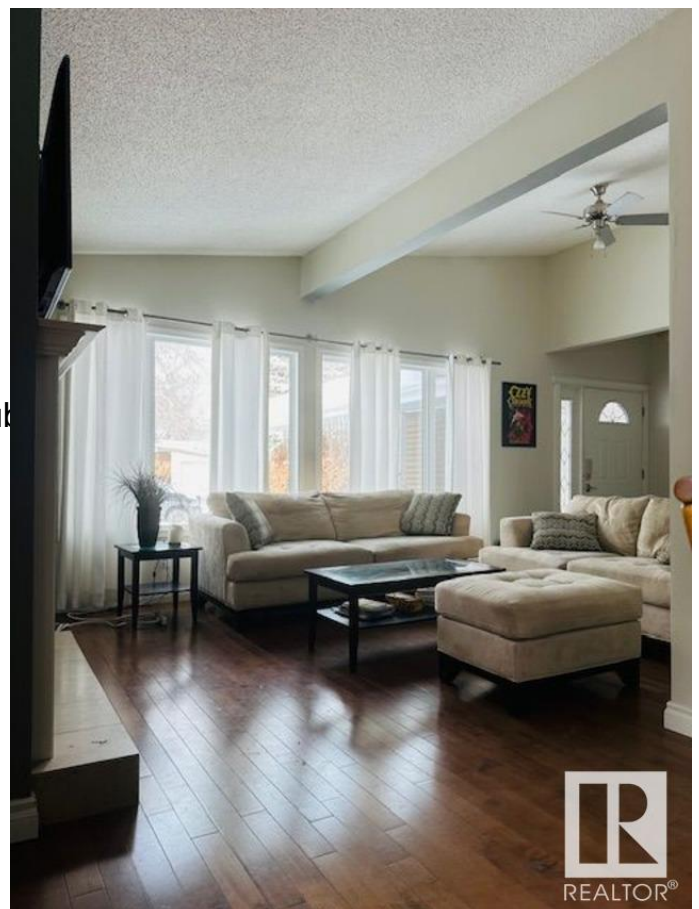
Interior Features ensuite bathroom
Appliances See Remarks
Heating Forced Air-1, Natural Gas
Fireplace Yes
Fireplaces Mantel
Stories 2
Has Basement Yes
Basement Full, Finished

Exterior

Exterior Wood, Vinyl
Exterior Features Fenced, Fruit Trees/Shrub
Schools, Shopping Nearby
Roof Metal
Construction Wood, Vinyl
Foundation Concrete Perimeter

Additional Information

Date Listed April 21st, 2025
Days on Market 55
Zoning Zone 24



DATA IS DEEMED RELIABLE BUT IS NOT GUARANTEED ACCURATE BY THE REALTORS® ASSOCIATION OF EDMONTON. COPYRIGHT 2025 BY THE REALTORS® ASSOCIATION OF EDMONTON. ALL RIGHTS RESERVED. Trademarks are owned or controlled by the Canadian Real Estate Association (CREA) and identify real estate professionals who are members of CREA (REALTOR®, REALTORS®) and/or the quality of services they

provide (MLS®®, Multiple Listing Service®®)
Listing information last updated on June 15th, 2025 at 4:32pm MDT