

Courtesy Of Jeff D Jackson Of Bode

\$644,900 - 19007 20 Avenue, Edmonton

MLS® #E4430979

\$644,900

3 Bedroom, 2.50 Bathroom, 2,084 sqft

Single Family on 0.00 Acres

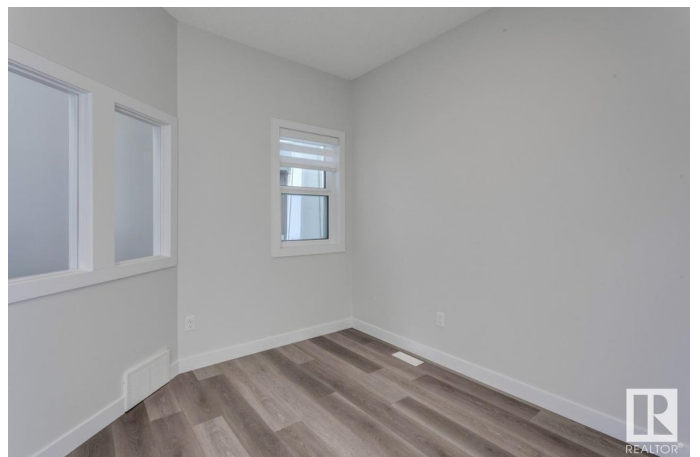
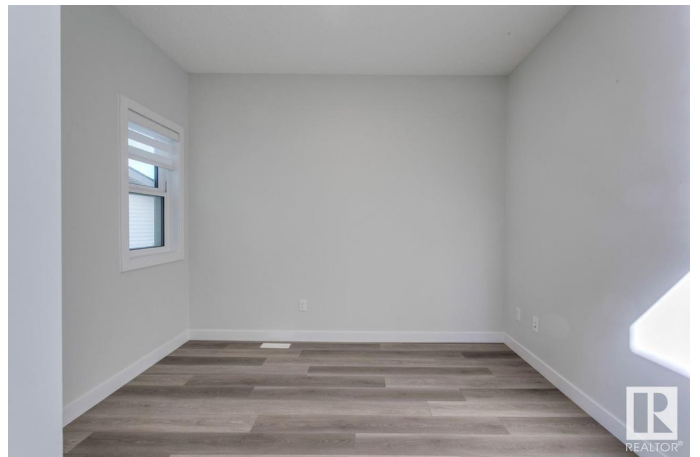
River's Edge, Edmonton, AB

Welcome to the Allure by Look Master Builder, a stunning 3-bedroom, 2.5-bathroom two-story home located on a pie-shaped lot in the picturesque community of Rivers Edge. This front-attached garage home features a grand open-to-above entry foyer, creating a bright and inviting space. The main floor offers a modern kitchen with a central island, a convenient walkthrough mudroom leading to the pantry, and a cozy great room with an electric fireplace and mantle. A den/office on the main floor provides the perfect workspace. Upstairs, the spacious bonus room is ideal for family gatherings, while the primary bedroom boasts a vaulted ceiling and a luxurious 5-piece ensuite with a soaker tub, dual sinks, and a stand-alone shower. Two additional bedrooms, a full bathroom, and a laundry room complete the upper floor. With a side entrance to the basement, this home is perfect for future development. Quick possession available!

Built in 2024

Essential Information

MLS® #	E4430979
Price	\$644,900
Bedrooms	3
Bathrooms	2.50
Full Baths	2



Half Baths	1
Square Footage	2,084
Acres	0.00
Year Built	2024
Type	Single Family
Sub-Type	Detached Single Family
Style	2 Storey
Status	Active

Community Information

Address	19007 20 Avenue
Area	Edmonton
Subdivision	River's Edge
City	Edmonton
County	ALBERTA
Province	AB
Postal Code	T6M 2N6

Amenities

Amenities	No Animal Home, No Smoking Home, See Remarks
Parking Spaces	4
Parking	Double Garage Attached

Interior

Interior Features	ensuite bathroom
Appliances	See Remarks
Heating	Forced Air-1, Natural Gas
Fireplace	Yes
Fireplaces	Insert
Stories	2
Has Basement	Yes
Basement	Full, Unfinished

Exterior

Exterior	Wood, Stone, Vinyl
Exterior Features	Park/Reserve, Playground Nearby, Schools, Shopping Nearby
Roof	Asphalt Shingles
Construction	Wood, Stone, Vinyl
Foundation	Concrete Perimeter

Additional Information

Date Listed April 15th, 2025
Days on Market 62
Zoning Zone 57

DATA IS DEEMED RELIABLE BUT IS NOT GUARANTEED ACCURATE BY THE REALTORS® ASSOCIATION OF EDMONTON. COPYRIGHT 2025 BY THE REALTORS® ASSOCIATION OF EDMONTON. ALL RIGHTS RESERVED.Trademarks are owned or controlled by the Canadian Real Estate Association (CREA) and identify real estate professionals who are members of CREA (REALTOR®, REALTORS®) and/or the quality of services they provide (MLS®, Multiple Listing Service®)
Listing information last updated on June 16th, 2025 at 7:17am MDT