

## **\$485,000 - 14 Maywood Road, Sherwood Park**

MLS® #E4430027

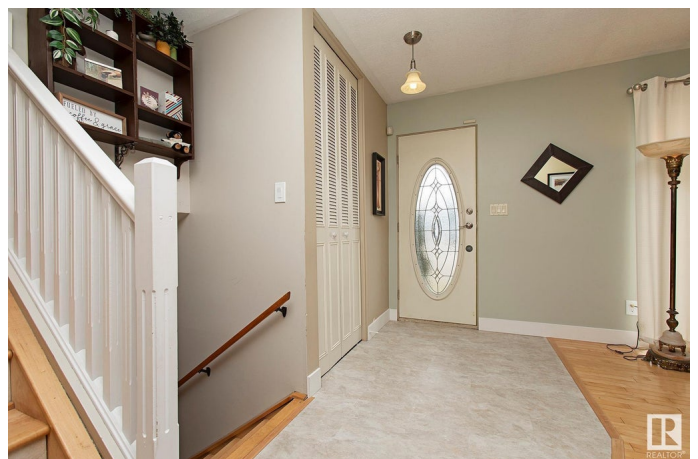
**\$485,000**

4 Bedroom, 2.00 Bathroom, 1,277 sqft

Single Family on 0.00 Acres

Maplewood (Sherwood Park), Sherwood Park, AB

BACKING ONTO PARK & nestled in on a quiet street, this home has been meticulously cared-for. Do not hesitate, as this is a rare gem of Sherwood Park. This 4-Level Split has over 2,400 SqFt of Living space including 1,276 SqFt Above-Grade. 4 Bedrooms (potential for a 5th); 3 Bathrooms & a HUGE, Oversized Double Garage. UPGRADES: NEW 50 Year RUBBER Shingles (2019); Hi-Eff Furnace (2019); Most Windows replaced; New Tile Surround in Bathroom to name a few. The Main Floor has Hardwood in the spacious Living Rm & the Dining Rm leads to the amazing, remodelled Kitchen (2004) boasting plenty of Cabinets & Counterspace for the gourmet chef in your household! The Upper Floor has 3 Bedrms each having Hardwood & incl. a large Primary Bedrm c/w a 1/2 Ensuite. The Main Bathrm completes this floor. The 3rd Level has a Family Rm w. a W/B Fireplace; 4th Bedrm; Laundry & Bathrm. The Finished Basement has a large Rec Rm; Den & Storage. The massive yard leads to the park. What an amazing family home! Don't miss out!



Built in 1970

### **Essential Information**

MLS® # E4430027

Price \$485,000

Bedrooms	4
Bathrooms	2.00
Full Baths	1
Half Baths	2
Square Footage	1,277
Acres	0.00
Year Built	1970
Type	Single Family
Sub-Type	Detached Single Family
Style	4 Level Split
Status	Active

### Community Information

Address	14 Maywood Road
Area	Sherwood Park
Subdivision	Maplewood (Sherwood Park)
City	Sherwood Park
County	ALBERTA
Province	AB
Postal Code	T8A 0K1

### Amenities

Amenities	Patio, See Remarks
Parking Spaces	6
Parking	Double Garage Detached

### Interior

Interior Features	ensuite bathroom
Appliances	Dishwasher-Built-In, Dryer, Garage Control, Garage Opener, Oven-Microwave, Refrigerator, Stove-Electric, Vacuum Systems, Washer, Window Coverings
Heating	Forced Air-1, Natural Gas
Fireplace	Yes
Fireplaces	Brick Facing
Stories	4
Has Basement	Yes
Basement	Full, Finished

### Exterior

Exterior	Wood, Stucco, Vinyl
Exterior Features	Backs Onto Park/Trees, Fenced, Landscaped, Park/Reserve, Playground Nearby, Public Transportation, Schools, Shopping Nearby, See Remarks
Roof	See Remarks
Construction	Wood, Stucco, Vinyl
Foundation	Concrete Perimeter

**Additional Information**

Date Listed	April 10th, 2025
Days on Market	18
Zoning	Zone 25

DATA IS DEEMED RELIABLE BUT IS NOT GUARANTEED ACCURATE BY THE REALTORS® ASSOCIATION OF EDMONTON. COPYRIGHT 2025 BY THE REALTORS® ASSOCIATION OF EDMONTON. ALL RIGHTS RESERVED.Trademarks are owned or controlled by the Canadian Real Estate Association (CREA) and identify real estate professionals who are members of CREA (REALTOR®, REALTORS®) and/or the quality of services they provide (MLS®, Multiple Listing Service®)

Listing information last updated on April 28th, 2025 at 4:17am MDT