

\$399,999 - 101 5151 Windermere Boulevard, Edmonton

MLS® #E4421208

\$399,999

1 Bedroom, 1.50 Bathroom, 1,443 sqft
Condo / Townhouse on 0.00 Acres

Ambleside, Edmonton, AB

Experience the epitome of luxury living in this sophisticated two-storey executive home nestled in the prestigious neighborhood of Ambleside. With 1,442 sq ft of meticulously designed interior space, this residence boasts unparalleled features for the discerning buyer. The south-facing orientation floods the open-concept living area with natural light, accentuated by expansive windows and two private patios, perfect for tranquil relaxation or lavish entertaining. The exceptionally large primary suite is a sanctuary of comfort and elegance, while the oversized kitchen, equipped with a pantry and high-end appliances, caters to culinary excellence. An additional office/den offers versatile space for work or leisure. This home includes a private underground double garage for maximum convenience and security. Unmatched in quality and style, this residence offers an exquisite blend of form and function for those who seek an extraordinary lifestyle. Indulge in the luxury you deserve.

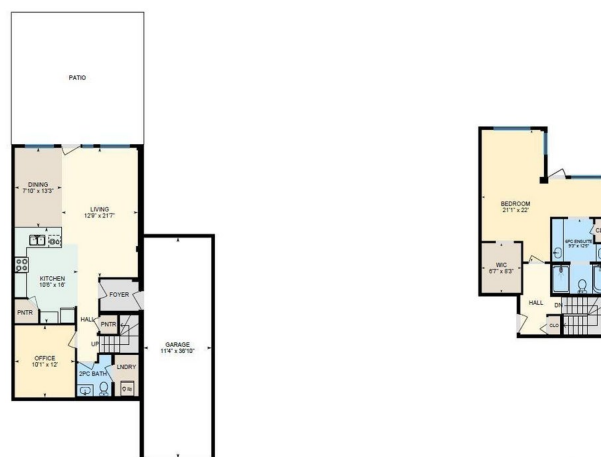
Built in 2015

Essential Information

MLS® #	E4421208
Price	\$399,999
Bedrooms	1



Main Building: Total Interior Area Above Grade 1442.81 sq ft



101-5151 Windermere Blvd, Edmonton, AB

Main Floor: Interior Area 856.69 sq ft
Excluded Area 415.67 sq ft



Bathrooms	1.50
Full Baths	1
Half Baths	1
Square Footage	1,443
Acres	0.00
Year Built	2015
Type	Condo / Townhouse
Sub-Type	Apartment High Rise
Style	Multi Level Apartment
Status	Active

Community Information

Address	101 5151 Windermere Boulevard
Area	Edmonton
Subdivision	Ambleside
City	Edmonton
County	ALBERTA
Province	AB
Postal Code	T6W 2K4

Amenities

Amenities	Air Conditioner, Closet Organizers, Club House, Exercise Room, No Smoking Home, Parking-Visitor, Patio, Secured Parking, Security Door, Sprinkler System-Fire, Concierge Service
Parking Spaces	2
Parking	Heated
Is Waterfront	Yes

Interior

Interior Features	ensuite bathroom
Appliances	Dishwasher-Built-In, Dryer, Microwave Hood Fan, Refrigerator, Stove-Electric, Washer
Heating	Heat Pump, Electric, Natural Gas
# of Stories	8
Stories	2
Has Basement	Yes
Basement	None, No Basement

Exterior

Exterior	Concrete, Composition
Exterior Features	Backs Onto Lake, Backs Onto Park/Trees
Roof	Flat
Construction	Concrete, Composition
Foundation	Concrete Perimeter

Additional Information

Date Listed	February 12th, 2025
Days on Market	150
Zoning	Zone 56
HOA Fees	50
HOA Fees Freq.	Annually
Condo Fee	\$962

DATA IS DEEMED RELIABLE BUT IS NOT GUARANTEED ACCURATE BY THE REALTORS® ASSOCIATION OF EDMONTON. COPYRIGHT 2025 BY THE REALTORS® ASSOCIATION OF EDMONTON. ALL RIGHTS RESERVED.Trademarks are owned or controlled by the Canadian Real Estate Association (CREA) and identify real estate professionals who are members of CREA (REALTOR®, REALTORS®) and/or the quality of services they provide (MLS®, Multiple Listing Service®)

Listing information last updated on July 12th, 2025 at 7:32am MDT